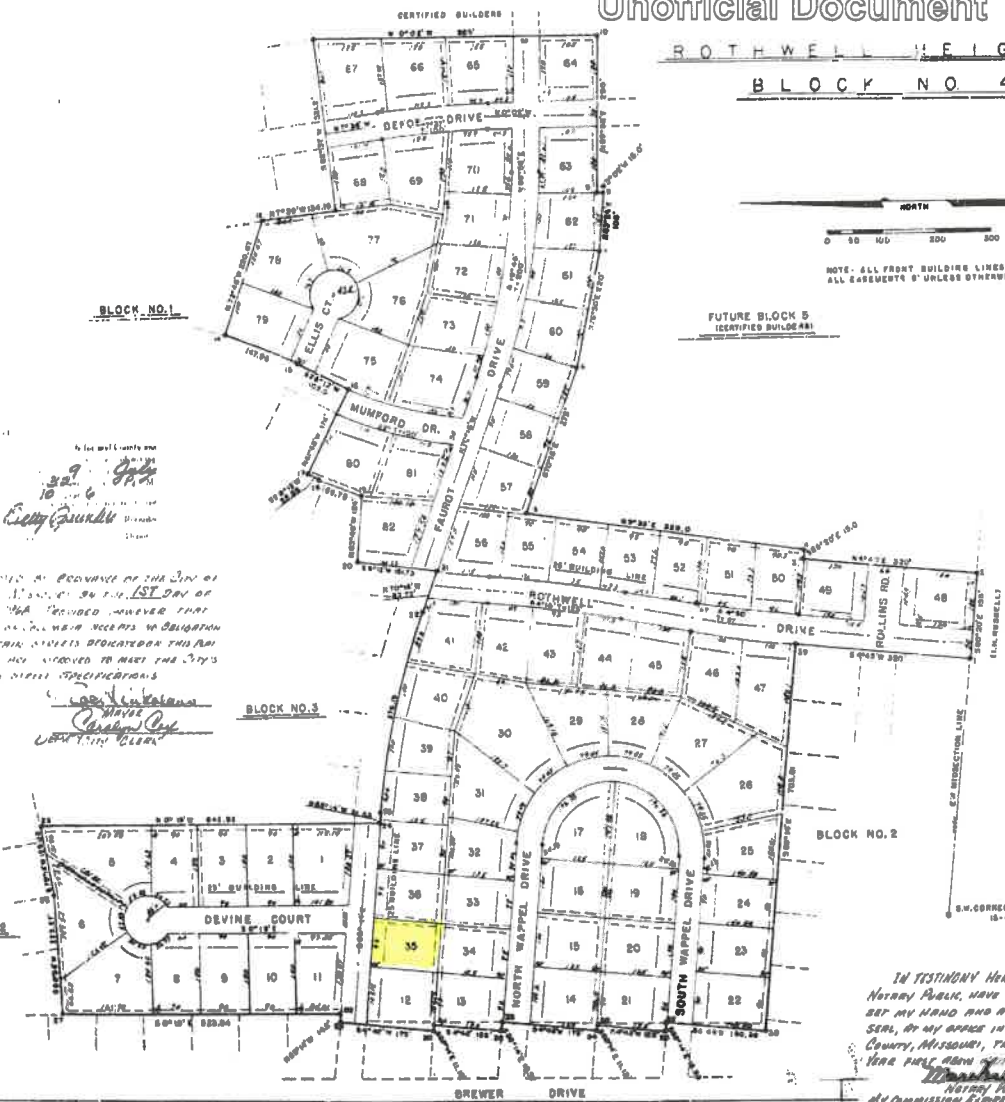


Boone County, Missouri

Unofficial Document

ROTHWELL HEIGHTS BLOCK NO. 4



FILED IN BOOK 117 PAGE 117
 JUL 9 1968
 CLERK OF COURTS

I, the undersigned, J. Carroll Coombs, have divided the land described in the 1st of the Series of 28A, 28B, 28C, 28D, 28E, 28F, 28G, 28H, 28I, 28J, 28K, 28L, 28M, 28N, 28O, 28P, 28Q, 28R, 28S, 28T, 28U, 28V, 28W, 28X, 28Y, 28Z, 28AA, 28AB, 28AC, 28AD, 28AE, 28AF, 28AG, 28AH, 28AI, 28AJ, 28AK, 28AL, 28AM, 28AN, 28AO, 28AP, 28AQ, 28AR, 28AS, 28AT, 28AU, 28AV, 28AW, 28AX, 28AY, 28AZ, 28BA, 28BB, 28BC, 28BD, 28BE, 28BF, 28BG, 28BH, 28BI, 28BJ, 28BK, 28BL, 28BM, 28BN, 28BO, 28BP, 28BQ, 28BR, 28BS, 28BT, 28BU, 28BV, 28BW, 28BX, 28BY, 28BZ, 28CA, 28CB, 28CC, 28CD, 28CE, 28CF, 28CG, 28CH, 28CI, 28CJ, 28CK, 28CL, 28CM, 28CN, 28CO, 28CP, 28CQ, 28CR, 28CS, 28CT, 28CU, 28CV, 28CW, 28CX, 28CY, 28CZ, 28DA, 28DB, 28DC, 28DD, 28DE, 28DF, 28DG, 28DH, 28DI, 28DJ, 28DK, 28DL, 28DM, 28DN, 28DO, 28DP, 28DQ, 28DR, 28DS, 28DT, 28DU, 28DV, 28DW, 28DX, 28DY, 28DZ, 28EA, 28EB, 28EC, 28ED, 28EE, 28EF, 28EG, 28EH, 28EI, 28EJ, 28EK, 28EL, 28EM, 28EN, 28EO, 28EP, 28EQ, 28ER, 28ES, 28ET, 28EU, 28EV, 28EW, 28EX, 28EY, 28EZ, 28FA, 28FB, 28FC, 28FD, 28FE, 28FF, 28FG, 28FH, 28FI, 28FJ, 28FK, 28FL, 28FM, 28FN, 28FO, 28FP, 28FQ, 28FR, 28FS, 28FT, 28FU, 28FV, 28FW, 28FX, 28FY, 28FZ, 28GA, 28GB, 28GC, 28GD, 28GE, 28GF, 28GG, 28GH, 28GI, 28GJ, 28GK, 28GL, 28GM, 28GN, 28GO, 28GP, 28GQ, 28GR, 28GS, 28GT, 28GU, 28GV, 28GW, 28GX, 28GY, 28GZ, 28HA, 28HB, 28HC, 28HD, 28HE, 28HF, 28HG, 28HH, 28HI, 28HJ, 28HK, 28HL, 28HM, 28HN, 28HO, 28HP, 28HQ, 28HR, 28HS, 28HT, 28HU, 28HV, 28HW, 28HX, 28HY, 28HZ, 28IA, 28IB, 28IC, 28ID, 28IE, 28IF, 28IG, 28IH, 28II, 28IJ, 28IK, 28IL, 28IM, 28IN, 28IO, 28IP, 28IQ, 28IR, 28IS, 28IT, 28IU, 28IV, 28IW, 28IX, 28IY, 28IZ, 28JA, 28JB, 28JC, 28JD, 28JE, 28JF, 28JG, 28JH, 28JI, 28JJ, 28JK, 28JL, 28JM, 28JN, 28JO, 28JP, 28JQ, 28JR, 28JS, 28JT, 28JU, 28JV, 28JW, 28JX, 28JY, 28JZ, 28KA, 28KB, 28KC, 28KD, 28KE, 28KF, 28KG, 28KH, 28KI, 28KJ, 28KL, 28KM, 28KN, 28KO, 28KP, 28KQ, 28KR, 28KS, 28KT, 28KU, 28KV, 28KW, 28KX, 28KY, 28KZ, 28LA, 28LB, 28LC, 28LD, 28LE, 28LF, 28LG, 28LH, 28LI, 28LJ, 28LK, 28LL, 28LM, 28LN, 28LO, 28LP, 28LQ, 28LR, 28LS, 28LT, 28LU, 28LV, 28LW, 28LX, 28LY, 28LZ, 28MA, 28MB, 28MC, 28MD, 28ME, 28MF, 28MG, 28MH, 28MI, 28MJ, 28MK, 28ML, 28MM, 28MN, 28MO, 28MP, 28MQ, 28MR, 28MS, 28MT, 28MU, 28MV, 28MW, 28MX, 28MY, 28MZ, 28NA, 28NB, 28NC, 28ND, 28NE, 28NF, 28NG, 28NH, 28NI, 28NJ, 28NK, 28NL, 28NM, 28NN, 28NO, 28NP, 28NQ, 28NR, 28NS, 28NT, 28NU, 28NV, 28NW, 28NX, 28NY, 28NZ, 28OA, 28OB, 28OC, 28OD, 28OE, 28OF, 28OG, 28OH, 28OI, 28OJ, 28OK, 28OL, 28OM, 28ON, 28OO, 28OP, 28OQ, 28OR, 28OS, 28OT, 28OU, 28OV, 28OW, 28OX, 28OY, 28OZ, 28PA, 28PB, 28PC, 28PD, 28PE, 28PF, 28PG, 28PH, 28PI, 28PJ, 28PK, 28PL, 28PM, 28PN, 28PO, 28PP, 28PQ, 28PR, 28PS, 28PT, 28PU, 28PV, 28PW, 28PX, 28PY, 28PZ, 28QA, 28QB, 28QC, 28QD, 28QE, 28QF, 28QG, 28QH, 28QI, 28QJ, 28QK, 28QL, 28QM, 28QN, 28QO, 28QP, 28QQ, 28QR, 28QS, 28QT, 28QU, 28QV, 28QW, 28QX, 28QY, 28QZ, 28RA, 28RB, 28RC, 28RD, 28RE, 28RF, 28RG, 28RH, 28RI, 28RJ, 28RK, 28RL, 28RM, 28RN, 28RO, 28RP, 28RQ, 28RR, 28RS, 28RT, 28RU, 28RV, 28RW, 28RX, 28RY, 28RZ, 28SA, 28SB, 28SC, 28SD, 28SE, 28SF, 28SG, 28SH, 28SI, 28SJ, 28SK, 28SL, 28SM, 28SN, 28SO, 28SP, 28SQ, 28SR, 28SS, 28ST, 28SU, 28SV, 28SW, 28SX, 28SY, 28SZ, 28TA, 28TB, 28TC, 28TD, 28TE, 28TF, 28TG, 28TH, 28TI, 28TJ, 28TK, 28TL, 28TM, 28TN, 28TO, 28TP, 28TQ, 28TR, 28TS, 28TT, 28TU, 28TV, 28TW, 28TX, 28TY, 28TZ, 28UA, 28UB, 28UC, 28UD, 28UE, 28UF, 28UG, 28UH, 28UI, 28UJ, 28UK, 28UL, 28UM, 28UN, 28UO, 28UP, 28UQ, 28UR, 28US, 28UT, 28UU, 28UV, 28UW, 28UX, 28UY, 28UZ, 28VA, 28VB, 28VC, 28VD, 28VE, 28VF, 28VG, 28VH, 28VI, 28VJ, 28VK, 28VL, 28VM, 28VN, 28VO, 28VP, 28VQ, 28VR, 28VS, 28VT, 28VU, 28VV, 28VW, 28VX, 28VY, 28VZ, 28WA, 28WB, 28WC, 28WD, 28WE, 28WF, 28WG, 28WH, 28WI, 28WJ, 28WK, 28WL, 28WM, 28WN, 28WO, 28WP, 28WQ, 28WR, 28WS, 28WT, 28WU, 28WV, 28WW, 28WX, 28WY, 28WZ, 28XA, 28XB, 28XC, 28XD, 28XE, 28XF, 28XG, 28XH, 28XI, 28XJ, 28XK, 28XL, 28XM, 28XN, 28XO, 28XP, 28XQ, 28XR, 28XS, 28XT, 28XU, 28XV, 28XW, 28XX, 28XY, 28XZ, 28YA, 28YB, 28YC, 28YD, 28YE, 28YF, 28YG, 28YH, 28YI, 28YJ, 28YK, 28YL, 28YM, 28YN, 28YO, 28YP, 28YQ, 28YR, 28YS, 28YT, 28YU, 28YV, 28YW, 28YX, 28YY, 28YZ, 28ZA, 28ZB, 28ZC, 28ZD, 28ZE, 28ZF, 28ZG, 28ZH, 28ZI, 28ZJ, 28ZK, 28ZL, 28ZM, 28ZN, 28ZO, 28ZP, 28ZQ, 28ZR, 28ZS, 28ZT, 28ZU, 28ZV, 28ZW, 28ZX, 28ZY, 28ZZ.

Received as Recorders of the State of Missouri on the 1st day of July, 1968, the following: however that the same shall be subject to obligation to maintain records hereon this plat with this plat recorded to meet the City's Minimum Detail Specifications.

LOUISIANA
 CHARLES
 LOUISIANA

IN TESTIMONY WHEREOF, I, a Notary Public, have hereunto set my hand and affixed my seal, at my office in Boone County, Missouri, the day and year first above written.

Marshall Tamm
 Notary Public
 My Commission Expires August 14, 1971

SUBSCRIBED AND SWORN TO before me a Notary Public this 1st day of July, 1968.

Elizabeth Taylor
 Clerk

KNOW ALL MEN BY THESE PRESENTS, that CERTIFIED BUILDERS, INC. is the OWNER OF THE ABOVE DESCRIBED TRACT OF LAND, THAT SAID LAND IS LOCATED IN BOONE COUNTY, MISSOURI, AND THAT WE HAVE CAUSED SAID TRACT OF LAND TO BE SURVEYED, SUBDIVIDED AND PLATTED AS SHOWN ON THE ATTACHED PLAT.

THE SUBDIVISION SHALL HEREAFTER BE KNOWN AS ROTHWELL HEIGHTS SUBDIVISION, BLOCK NO. 4.

THE STREETS ARE HEREBY DEDICATED TO PUBLIC USE FOREVER IN THE PLACES SHOWN ON THE ATTACHED PLAT.

EMACEMENTS FOR UTILITIES AND DRAINAGE ARE DEDICATED TO PUBLIC USE FOREVER IN THE PLACES SHOWN ON THE ATTACHED PLAT.

IN WITNESS WHEREOF, WE HAVE HEREUNTO SET OUR HANDS AND SEALS THIS 1st DAY OF JULY, 1968.

STATE OF MISSOURI: ss
 County of Boone: ss

On this 1st day of July, 1968, before me personally appeared ALI H. WILCOX, to me known, and being by me duly sworn, did say that he is the President of the Corporation of the State of Missouri, and that the seal affixed to the foregoing instrument is the corporate seal of said Corporation and that said instrument was signed and sealed in behalf of said Corporation by the authority of its Board of Directors and the said President acknowledged the instrument to be the free act and deed of said Corporation.

Nora Dietzel, Recorder of Deeds