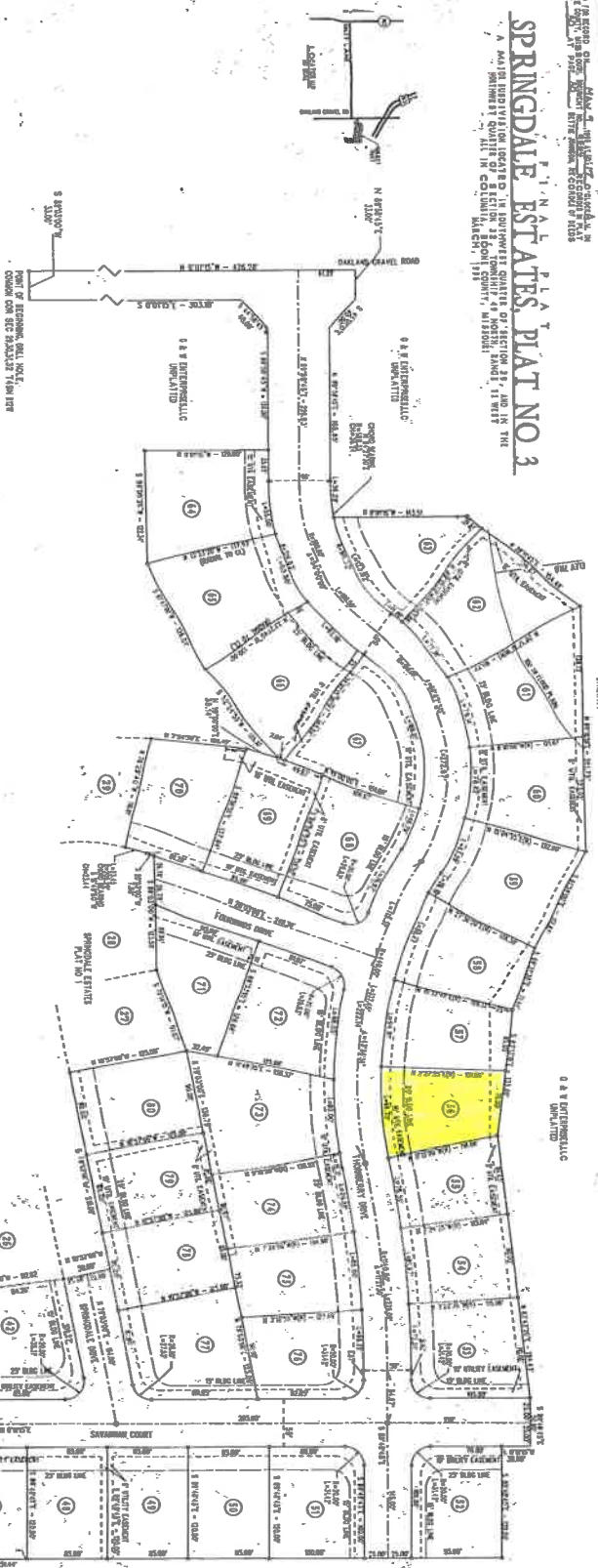


MAP 1 - MAP OF SPRINGDALE ESTATES, PLAT NO. 3
 A MAP SHOWING THE LOTS AND BLOCKS OF SECTION 29, TOWNSHIP 48 NORTH, RANGE 11 WEST, ALL IN COLLETT COUNTY, MISSISSIPPI.
 SPRINGDALE ESTATES, PLAT NO. 3



THESE LOTS AND BLOCKS ARE THE PROPERTY OF THE MISSISSIPPI STATE LAND OFFICE, AND ARE BEING OFFERED FOR SALE BY PUBLIC AUCTION, UNDER THE AUTHORITY OF THE MISSISSIPPI STATE LAND OFFICE, ON MONDAY, JANUARY 14, 1913, AT 10 O'CLOCK A.M., AT THE COURTHOUSE, JACKSON, MISSISSIPPI.

THE STATE OF MISSISSIPPI, by and through the MISSISSIPPI STATE LAND OFFICE, do hereby certify that the above is a true and correct copy of the original map on file in the office of the MISSISSIPPI STATE LAND OFFICE, JACKSON, MISSISSIPPI.

WITNESSED my hand and the seal of the MISSISSIPPI STATE LAND OFFICE, at JACKSON, MISSISSIPPI, this 10th day of January, 1913.



THESE LOTS AND BLOCKS ARE THE PROPERTY OF THE MISSISSIPPI STATE LAND OFFICE, AND ARE BEING OFFERED FOR SALE BY PUBLIC AUCTION, UNDER THE AUTHORITY OF THE MISSISSIPPI STATE LAND OFFICE, ON MONDAY, JANUARY 14, 1913, AT 10 O'CLOCK A.M., AT THE COURTHOUSE, JACKSON, MISSISSIPPI.

THE STATE OF MISSISSIPPI, by and through the MISSISSIPPI STATE LAND OFFICE, do hereby certify that the above is a true and correct copy of the original map on file in the office of the MISSISSIPPI STATE LAND OFFICE, JACKSON, MISSISSIPPI.

WITNESSED my hand and the seal of the MISSISSIPPI STATE LAND OFFICE, at JACKSON, MISSISSIPPI, this 10th day of January, 1913.



THESE LOTS AND BLOCKS ARE THE PROPERTY OF THE MISSISSIPPI STATE LAND OFFICE, AND ARE BEING OFFERED FOR SALE BY PUBLIC AUCTION, UNDER THE AUTHORITY OF THE MISSISSIPPI STATE LAND OFFICE, ON MONDAY, JANUARY 14, 1913, AT 10 O'CLOCK A.M., AT THE COURTHOUSE, JACKSON, MISSISSIPPI.

THE STATE OF MISSISSIPPI, by and through the MISSISSIPPI STATE LAND OFFICE, do hereby certify that the above is a true and correct copy of the original map on file in the office of the MISSISSIPPI STATE LAND OFFICE, JACKSON, MISSISSIPPI.

WITNESSED my hand and the seal of the MISSISSIPPI STATE LAND OFFICE, at JACKSON, MISSISSIPPI, this 10th day of January, 1913.



THESE LOTS AND BLOCKS ARE THE PROPERTY OF THE MISSISSIPPI STATE LAND OFFICE, AND ARE BEING OFFERED FOR SALE BY PUBLIC AUCTION, UNDER THE AUTHORITY OF THE MISSISSIPPI STATE LAND OFFICE, ON MONDAY, JANUARY 14, 1913, AT 10 O'CLOCK A.M., AT THE COURTHOUSE, JACKSON, MISSISSIPPI.

THE STATE OF MISSISSIPPI, by and through the MISSISSIPPI STATE LAND OFFICE, do hereby certify that the above is a true and correct copy of the original map on file in the office of the MISSISSIPPI STATE LAND OFFICE, JACKSON, MISSISSIPPI.

WITNESSED my hand and the seal of the MISSISSIPPI STATE LAND OFFICE, at JACKSON, MISSISSIPPI, this 10th day of January, 1913.

